

NEW Spanish Film Class Intensives

Teachers
Get
PDPs!

- Using film as the text for the class to deepen understanding of language and culture
- Short segments of the movie are shown each day
- Activities focus on speaking using the content of the film

January 8 -12

Monday - Friday
9 AM-12 NOON
\$350



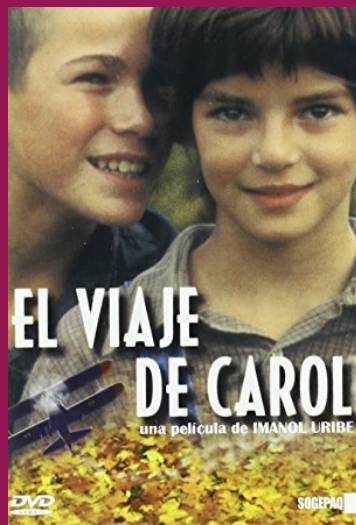
La Misma Luna
(Elementary level)



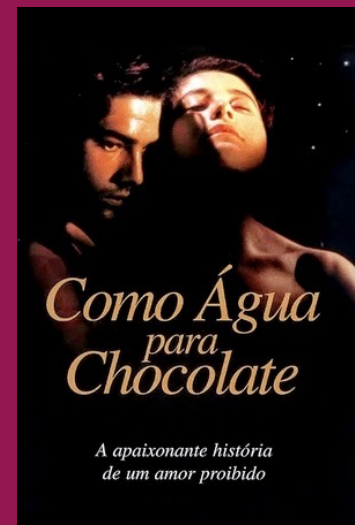
La Historia Oficial
(Intermediate level)

January 16 -19

Tuesday - Friday
9 AM -12 NOON
\$285



El Viaje de Carol
(Upper elementary level)



Como Agua para
Chocolate
(Upper Intermediate level)

THE INTERNATIONAL
Language Institute
OF MASSACHUSETTS



www.ili.edu
413.586.7569



ILI is accredited by the Accrediting Council for Continuing Education and Training